

Pipe Insulation Deterioration Check

PPM / Energy Conservation

When IR thermography is used to measure temperature of pipes, such as flues and steam pipes, temperature of portion where insulation is deteriorated or missing is measured higher than normal place.

On the other hand, cold pipe such as LNG shows lower temperature than normal place.

IR thermography allows you to identify defect without disassembling insulation, it helps to reduce repair costs significantly.

Also, it directly contributes to energy conservation by taking heat leak measures.



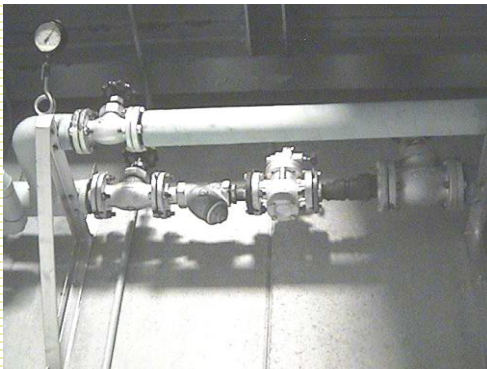
Handy-type Thermography
Thermo-flex F50



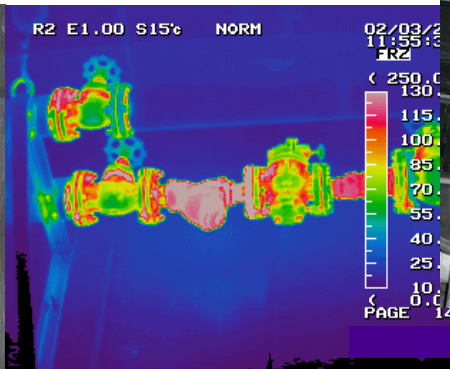
High-end Portable Thermography
InfRec R550 Series



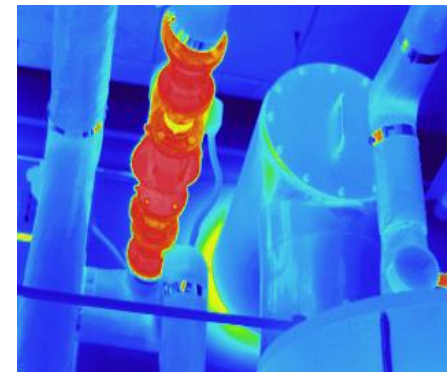
Visible Image



IR Thermography Image



Visible Image



IR Thermography Image