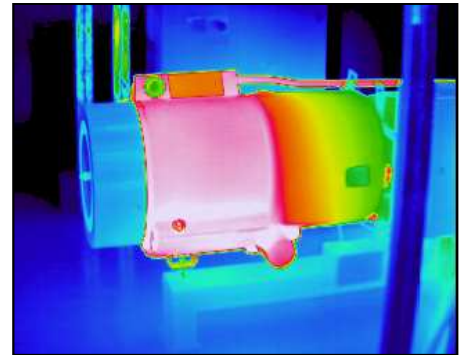
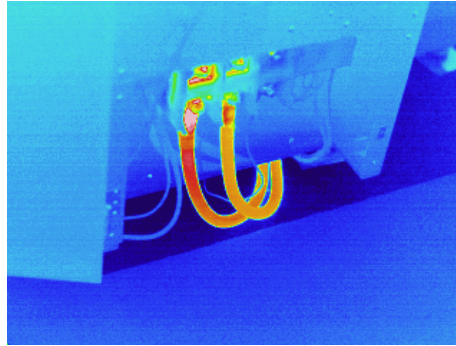
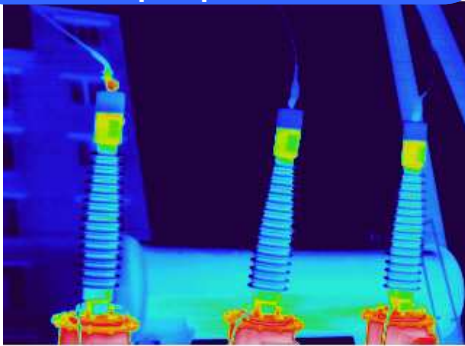


Railway Applications of IR Thermography

Avio IR cameras support various scenes at railway sector

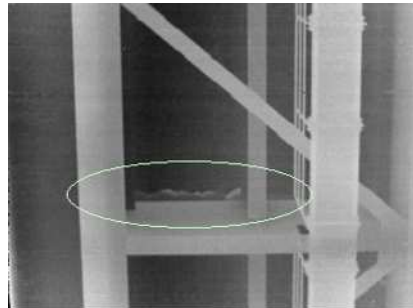
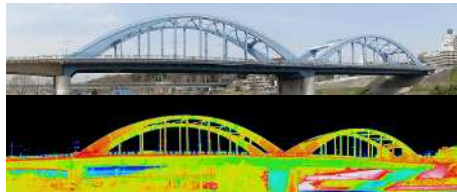
PPM of Various Equipment

Preventive maintenance of substation equipment, especially for CBM(Condition Based Maintenance)



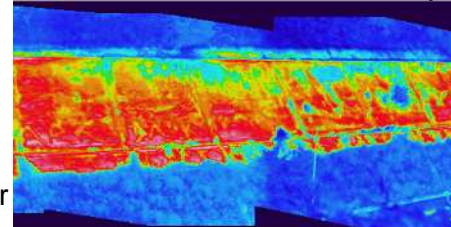
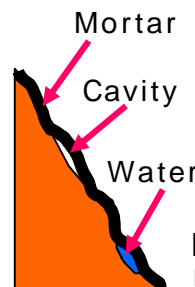
Inspection of Civil Engineering Structures

Delamination Diagnosis Concrete Bridge



For bridge floorboard, tunnel, cavity behind wall, and delamination diagnosis

Inspection of Excavation Slope



Flow of sediments and residence of water can be visualized.

Security



Train track intruder monitoring



IR Image



Visible Image

Clearly visualizes intruder in the darkness

Quick check of "Heat" by Avio IR thermography

Recommended Products

Most suitable for PPM



F50 Series



G100 Series

Adapted to various shooting scenes
"Angle-free" ergonomics design

- ◆ F50 Series
 - 240×240 pixels
 - Detachable camera unit (Ultimate angle-free)
 - Easy operation by touch panel
- ◆ G100 Series
 - 320×240 pixel
 - 270° rotating monitor for field use
 - Excellent cost-performance

Most suitable for civil engineering construction



R300SR Series



R500EX Series

High spec model of accuracy, resolution and definition

- ◆ R300SR Series
 - 320×240 pixels (Super resolution: 640×480)
 - Well-balanced, all-rounder model
- ◆ R500EX Series
 - 640×480 pixels (Super resolution: 1,280×960)
 - Max. 93° wide angle by optional lens
- ◆ R300SR/R500EX common spec.
 - Measurement accuracy: ±1
 - Temperature resolution: 0.025
 - Remote control available

See detail for brochures

Most suitable for security



TS600 Series

Wide angle high-definition monitoring
VGA pixel fixed monitoring camera

- ◆ TS600 Series
 - 640×480 pixels
 - Powerful alarm function (Main alarm, 32 divided alarm)
 - Remote control applicable
 - Onvif : Applicable as a network camera

PC-less simplified system can be constructed.

Avio offers most suitable model for all of your measurement needs.

 NIPPON AVIONICS CO., LTD.

Overseas Sales Department
Industrial Electronic Products Sales Division
4206, Ikonobe-cho, Yokohama, 224-0053, Japan
TEL +81-45-930-3596
Fax +81-45-930-3597
E-mail : product-irc-e@ml.avio.co.jp

<http://www.avio.co.jp/english/>



WARNINGS & CAUTIONS

- Before using this product, please carefully read the provided Operation Manual "WARNINGS" & "CAUTIONS" section to ensure proper operation.
- Please do not place the product in high temperature, high humidity or high inert gas environments.

Distributor: