

# ClearIR™ (AW, S, SW, P) Infrared Screening Window Installation Manual

## Introduction

These instructions apply to the IRISS ClearIR™ infrared screening windows models **ClearIR-4-AW** aluminum window, **ClearIR-4-S**, **ClearIR-4-SW** stainless steel windows and **ClearIR-4-P** acrylic window for use in screening guards and barriers.

## Tools Needed



- Hand drill
- 3/16 Drill bit
- 1/4 inch Drill bit (Only for the ClearIR-4-P)



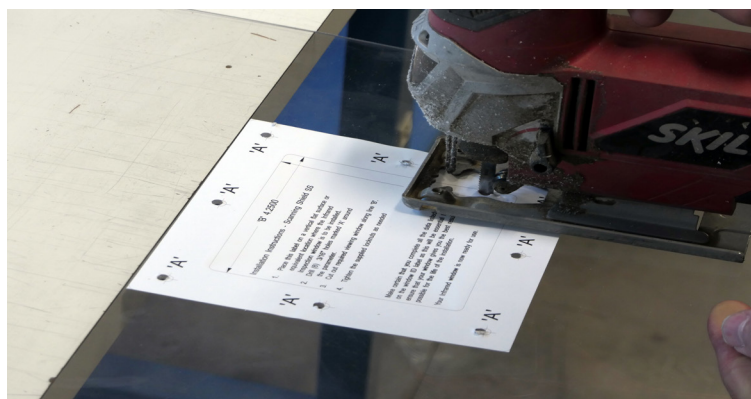
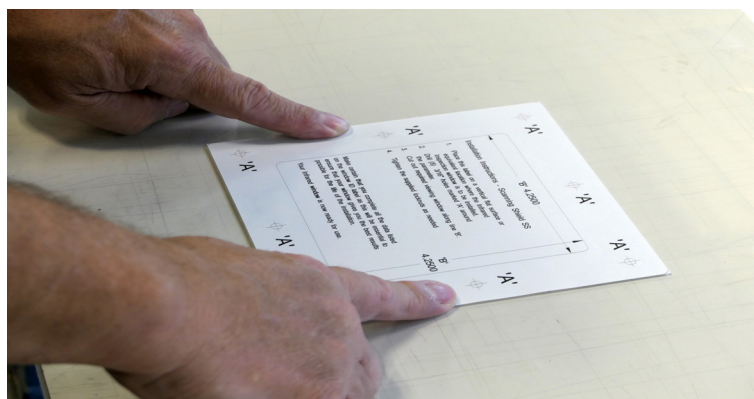
- Jig saw
- (use blade for material being cut)



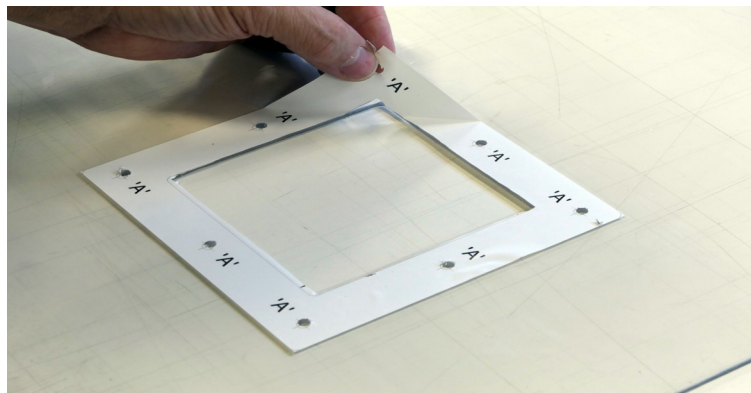
- 5/16 socket or wrench

## Installation Steps

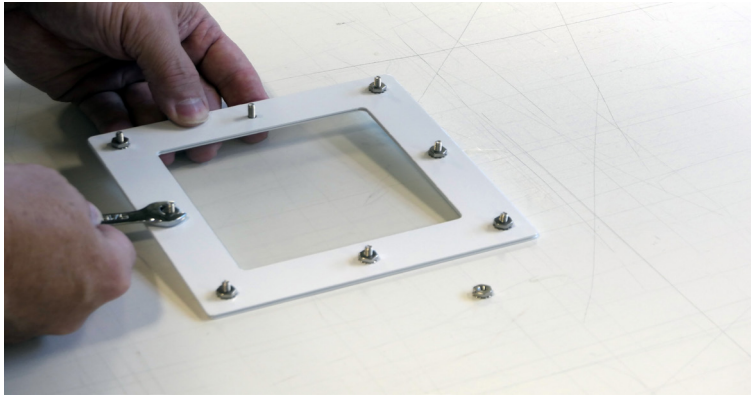
1. Apply cutting template to a flat vertical surface where the infrared screening window is to be installed.
3. Using a Jig saw cut out the window opening along the line marked 'B' in the middle of the cutting template.



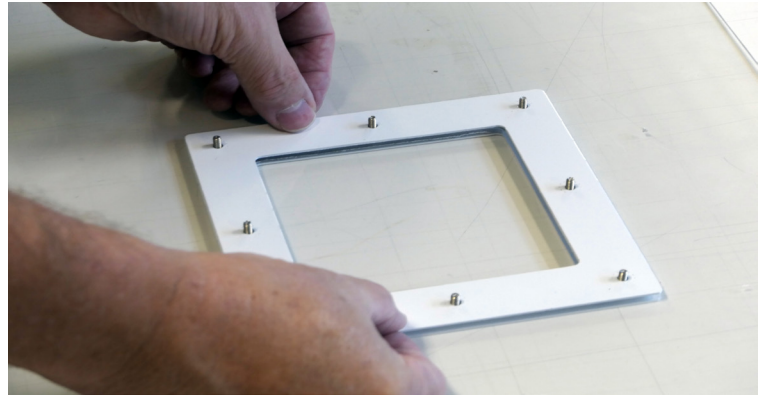
2. Using a hand drill with 3/16 or 1/4 inch for the ClearIR-4-P drill bit to drill the 8 holes marked 'A' around the perimeter of the cutting template.
4. Remove the remaining portion of the cutting template and deburr holes and edges as needed.



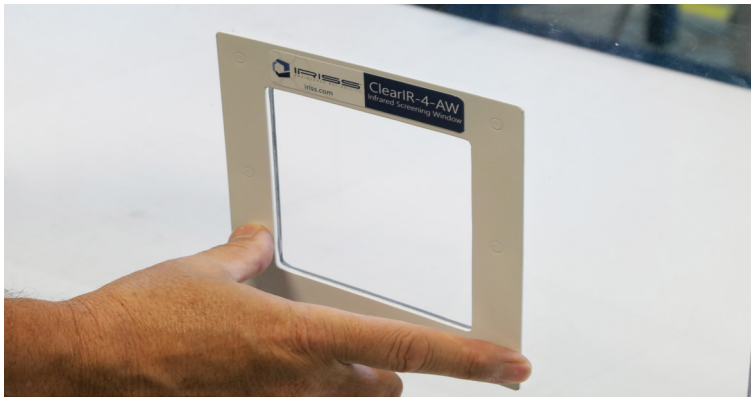
5. Remove hex nuts or wing nut on the ClearIR-4-P from the rear of the screening window and remove back plate.



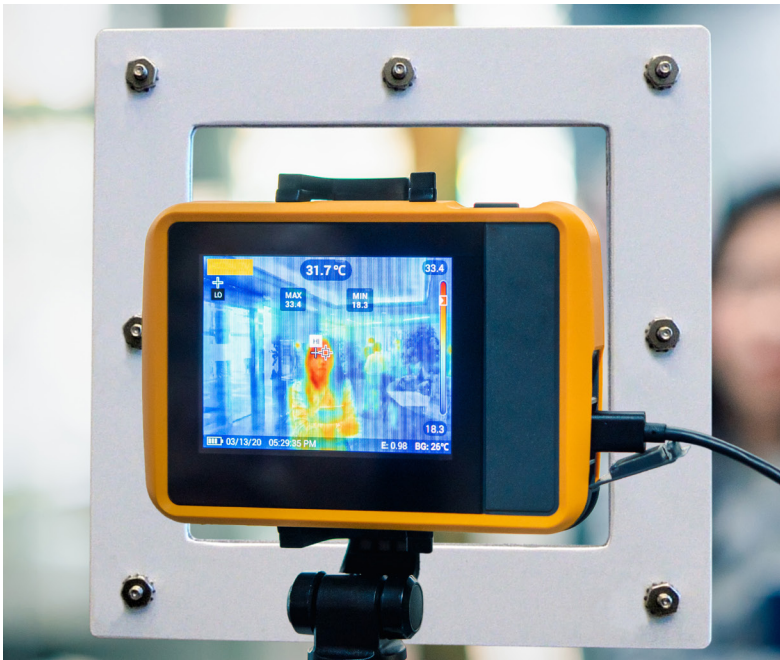
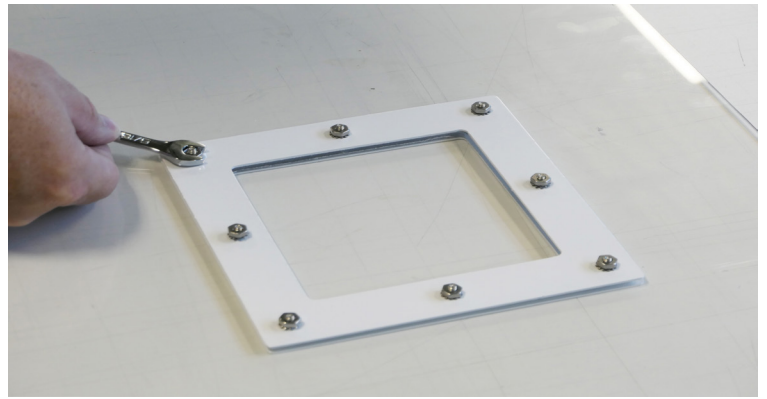
7. Reattach back plate to the rear of the window.



6. Place front plate with polyomer optic into cut out.



8. Replace the hex nuts or wing nut on the ClearIR-4-P by hand then tighten as needed with 5/16 socket or wrench.



## Protect Staff and Visitors

With a protective barrier between the people entering the building and the person tasked with monitoring temperatures, the sterile environment can be maintained without a threat to any staff or visitors.